

# The all-new Sorento.

Luxury without Limits.



Movement that inspires

# Kia Leading Innovation and Global Excellence.

Kia Corporation, founded in 1944, is South Korea's oldest automaker and a global leader in producing SUVs, sedans, and electric vehicles. Headquartered in Seoul, Kia focuses on sustainability and advanced design, positioning itself as a forward-thinking brand.

Its global R&D centers support this vision: the Nanyang center in South Korea develops performance and safety features, the Kia American Technical Center caters to North American needs, the Frankfurt center focuses on European validation, and the China R&D center tailors vehicles for the local market. Additionally, Kia's Japan center advances hybrid and electric vehicle technologies. These hubs help integrate cutting-edge technology, safety, and eco-friendly solutions in vehicles worldwide.



## Movement That Inspires

All creative activities begin with a movement!

As designers of movement,  
with the vision to create sustainable mobility solutions  
for the consumers, community, and the global society,  
our purpose at Kia is to deliver innovative products  
that inspire you when you move and  
deliver convenient and meaningful services  
demonstrating our commitment  
with everyone's most valuable resource,  
your time.



## The Inception of Lucky Motor Corporation.

Lucky Motor Corporation Limited (LMC), a subsidiary of Lucky Cement Limited (LCL), celebrated its fifth anniversary in June 2024. The company operates through three key business divisions: Automotive, Auto Parts, and Electronics. The Automotive division focuses on the assembly, marketing, distribution, and sales of Kia vehicles, along with their parts and accessories, within Pakistan. The Auto Parts division was established with the goal of localizing production for the auto parts required in locally assembled Kia models, contributing to greater self-sufficiency and cost efficiency.

LMC stands out for its distinctive operations and strategic portfolio diversification, consistently creating significant value for its stakeholders and reinforcing its position as an industry leader.



The all-new Sorento. Luxury without Limits.

A 7-seater large SUV that puts the focus firmly on family and luxury. The Kia Sorento seamlessly blends luxury with capability, offering a sophisticated yet versatile drive for families, urban explorers, and adventure seekers alike. With a spacious interior, cutting-edge technology, and powerful hybrid performance, it's designed to conquer both city streets and untamed terrains.

## Loaded with Natural Intelligence.

The new Sorento arrives with bold, dynamic contours, offering a more engaging and intuitive driving experience. With 20+ advanced intelligence controls, it enhances both safety and convenience, ensuring a smarter way to move through the world.





## Premium, Aggressive and Sophisticated.

A bold, dynamic, and sophisticated SUV with a sleek yet muscular design. Its striking front-end styling flows seamlessly to the rear, creating a commanding road presence. With an aggressive yet refined stance, it embodies success, power, and sophistication—making a statement wherever it goes.



## Bold for Nature. Futuristic Boldness.

The new Kia Sorento commands attention with its three-dimensional radiator grille, exuding a modern and assertive presence. Kia's next-generation Star-map DRLs, arranged in a striking vertical layout, enhance its progressive and high-tech appeal and the rugged front fascia, complemented by a bold skid plate and wide bumper design, reinforces its confident and dynamic stance.



Signature Star-Map DRLs with Headlamps



High Gloss Three-Dimensional Grille



Bold Skid Plate with an Aggressive Bumper

# Looks That Thrill.

Commanding the road with its sleek, aerodynamic profile, the Kia Sorento seamlessly blends luxury with capability. More than just an urban SUV, it redefines premium comfort—equally at home in urban streets, rugged terrains, and everyday adventures.



19" Aerodynamic Alloy Wheels



Elegant Chrome Side Garnish



Chrome Finish Molding for a Refined Look.





# Rugged Good Looks.

The rear design is reinforced with a striking Star-Map graphic seamlessly connecting the vertical tail lamps with a wide rear skid plate integrates with the black cladding’s bold graphic elements, creating a solid and rugged SUV presence, further complemented by sleek and refined High Mounted Stop Lamp.



Unique Star-Map LED Rear Lamps



Wide and Solid Rear Skid Plate



Sleek and Refined LED High Mounted Stop Lamp

Driver Centric Immersive High-Tech Cockpit.  
So much tech. So easy to use.

The high-tech, driver-centric smart cockpit offers an elevated space with intelligent one-touch features and advanced sensory intelligence. Sleek horizontal lines and integrated displays, combined with intuitive controls, are optimally placed for easy reach, minimizing distractions and enhancing the luxury experience.



Premium All-Black Monotone Leather Interior

# It's All About Perspective.

Technology sometimes does more for us when we're barely aware of it. The Sorento's horizontally oriented driver interface organizes more functions in a tastefully contained, easy-to-understand way. The look is simple, but the brainpower runs deep.



## Dual 12.3" Panoramic Curved Display

The wide, hexagonal display goes beyond aesthetics, delivering an immersive experience with clear visibility. The seamless & fully digital wide and expansive screens provide crucial driving information and infotainment data which can be customized to your preference by drag & drop widgets on the screen.



## Wireless Android Auto and Apple CarPlay

The infotainment and audio system provide seamless wireless connectivity with mobile devices through Android Auto and Apple CarPlay, ensuring a smooth and immersive driving experience.



## Advanced Drive Assistance

Enhance your drive with effortless control over Advanced Driver Assistance features, seamlessly displayed on the infotainment screen. With one-touch access, receive real-time alerts and support for a safer, more convenient journey.



## Infotainment/Climate Switchable Controller

Keep comfortable in any weather with dual-zone climate control. Infotainment and climate functions share the same LCD soft keyboard. This improves the intuitiveness and luxury of the cockpit design. Press the fan icon to transform the controls to climate. Press the arrow icon to switch to Infotainment.



## Smart Car Wash Mode

The infotainment provide Car Wash Mode that optimizes your Kia Sorento for a hassle-free wash by folding mirrors, locking windows, disabling wipers, and adjusting climate control. This smart feature ensures a smooth and safe car wash experience.



## Real-Time Digital Cluster

The Kia Sorento's 12.3" Digital Cluster provides real-time driving insights, including terrain mode selection, torque distribution, and safety alerts. Its high-resolution interface enhances driver awareness for a confident and controlled ride.

## Space to unwind.

With comfortable and supportive seating for up to seven, the Sorento sets a new standard for people-friendly use of space. Roominess, brightness, and practicality enrich every journey.



## Panoramic Sunroof.

Have your very own private sky lounge experience with the panoramic glass sunroof, creating an open, spacious feeling.



# We All Need Some Space.

From the texture and finish of its materials to the well-positioned and durable seats and fixtures, the Sorento elevates the experience of travel. Beauty is not just outside those big windows. It’s all around you.



**1st Row Comfort Seat**  
While in Park Mode, the driver and front passenger comfort seats recline to offer a pleasurable experience with enhanced cushion support.



**Smart One-Touch 2nd Row Sliding Walk-In Device**  
This allows effortless access to the third row with a simple button press. This convenient feature automatically slides and folds the second-row seat forward, making entry and exit easier for passengers.



# More Accommodating than Ever Before.

The Sorento is ready for you even before you get inside. Seats move for easier ingress, and the tailgate automatically open as you get closer. It’s all about making life simpler and more efficient.



**Smart Power Tailgate with Memory and Height Adjuster**  
Simply stand behind the vehicle for three seconds with the smart key in your possession, and the tailgate will open automatically. You can even set the opening height to fit your preference.



**Passenger Walk-in Device**  
With the press of a button on the inner side of the front passenger seat, the driver can temporarily move the seat forward and fold the seatback to let rear passengers in and out more easily.



**Ergo Motion Driver's Seat**  
A system of air pockets means substantial support and comfort in a slim profile. The air pressure adjusts to match the driver's individual posture, with extra side support when in Sport drive mode.

# First Class Comfort.

The Kia Sorento delivers exceptional comfort with generous legroom across all three rows. The reclining second-row seats offer personalized relaxation, while the third-row AC controls let passengers adjust the temperature to their preference, ensuring a comfortable ride for everyone.



Sliding, Reclining 2nd Row Seats (60:40)



Headrests with Height Adjust (All Seats) & Tilt Function (Front Seats)



Third Row AC Controls

# More Space As You Go.

Maximize your cargo space with flexible seating configurations—fold the 2nd and 3rd rows flat for a spacious loading area or adjust with 50:50 and 60:40 split options to suit your needs.



Full Folding 3rd Row Seats



Split Folding 60:40 and 50:50 Seats





# Powerful. Agile. Efficient.

With proven powerplants and precisely matched transmissions, the Sorento rises to the challenges of the road. Braking is controlled and firm, and new bushings and frequency-sensitive dampers make for a silky-smooth ride. Now more than ever, performance is about not only fulfilling your intentions, but exceeding your expectations.

## Electrifying Luxe.

Introducing the latest generation of SmartStream engines: the robust 3.5L MPI for powerful performance and the efficient 1.6L T-GDI Hybrid. Designed for enhanced efficiency, these engines deliver the perfect balance of power and fuel economy.



**SmartStream G3.5**  
Transmission 8 Speed Automatic

Max Output: 269 Hp  
Max Torque: 331 Nm



**SmartStream G1.6 T-GDI HEV**  
Transmission 6 Speed Automatic

**Engine**  
Max Output: 177 Hp  
Max Torque: 265 Nm

**Motor**  
Max Output: 59 Hp  
Max Torque: 264 Nm

**Combined**  
Max Output: 238 Hp  
Max Torque: 367 Nm

The V6 Power House.  
Versatile Performance.



Innovation that Moves You Forward.

## Regenerative Braking

Experience smarter efficiency with the new Kia Sorento's Regenerative Braking in Hybrid variants. Every time you slow down, the system recaptures energy and converts it into power, enhancing fuel efficiency while delivering a smoother, more eco-friendly drive.



A Born Adventurer.



The available terrain mode provides optimum driving force on challenging road conditions during your drive. Terrain Mode will offer better traction, stability and control on different types of surfaces such as Mud, Snow or Sand, featuring dedicated new driver modes for each scenario.

## Torque-Vectoring All-Wheel Drive

**Torque Vectoring Cornering Control (TVCC)** enhances stability by adjusting power distribution, ensuring confident handling on wet, icy, or off-road surfaces.



The **Dynamax™ Intelligent AWD system** in the Sorento actively monitors road conditions, predicting traction needs and dynamically distributing torque for optimal grip.



**Terrain Mode**  
The AWD variant also features Terrain Modes (Snow, Mud, Sand) for enhanced traction and control on challenging surfaces.



# Forge a New Path.



Take the road less traveled with an available all-wheel drive system that monitors road conditions, distributing power across the wheels for enhanced traction and control.



**Drive Modes**  
It offers multiple drive modes—Normal, Eco, Sport, and Smart—allowing you to tailor your driving experience to different road conditions.



**Paddle Shifters**  
Located behind the steering wheel, paddle shifters allow drivers to easily switch gears without using the brakes and provide a sportier, smoother driving experience.



**Colored HD Head-Up Display**  
Keep your eyes on the road with the color head-up display projecting driving information within your field of view. The system displays alerts from the car's numerous driver assistance technologies, details of vehicle speed, and media.



**Shift-by-Wire (Dial Type)**  
Features a Shift-By-Wire (SBW) system, offering seamless and effortless gear shifts with a modern, electronic rotary dial. This advanced technology enhances driving convenience, providing a smooth and intuitive transition between gears at the push of a button.

# Advanced Technologies. Smart Driving Made Simple.



**Smart Key with Remote Engine Start**  
Available Remote Start & Climate Control lets you start your vehicle remotely and set the cabin temperature before you even step inside.

The Kia Sorento is equipped with **luxury convenience features** designed to enhance every journey.



**Push Start Button**



**Smart Keyless Entry with Welcome Lights**



# Redefining Luxury, Shaping Every Emotion.

Customize your interior with the direct mood lamp in the lower part of the slim vent in the crash pad. This will elevate your in-car atmosphere into a more sophisticated level.



**Wireless Charging Pad**  
The rubber-lined, wireless charging pad in the center console can quickly charge compatible smartphones.



**3D Mood Light at Door Trim**



**64-Color LED Ambient Mood Light**

# Luxury at Large.

Enjoy the ultimate comfort all year round with 3-step adjustable 1st row ventilated seats & 1st/2nd outboard heated seats.

With smart temperature comfort control, the car automatically switches on the driver's heated seat/steering wheel or ventilated seat if there's a major difference between the climate control setting and the actual temperature inside the cabin.



**12 Bose® Premium Sound System  
(8 Speakers, 2 Tweeters, Centre Speaker & Subwoofer)**  
The powerful BOSE® surround-sound audio system delivers an immersive sound to all three rows.



**3 Spoke Heated Steering Wheel with Multimedia Controls**



**Heated and Ventilated Seating**

# Relaxation in Style.

Enjoy long journeys in perfect comfort with 14-way power driver's seat, including 4-way lumbar support, cushion extension & 2 seating position memory function. For the front passenger, 10-way power seat with 2-way lumbar support and walk-in switch is available.



**14-Way Power Driver's Seat with Lumbar Support & Extendable Cushion for Ultimate Comfort**



**10-Way Power Passenger Seat with 2-Way Lumbar Support for Enhanced Comfort**

Sorento's Memory Seats conveniently recall your preferred seating position at the touch of a button, ensuring personalized comfort every time you drive.



**Integrated Memory System (Driver)**  
The position of the driver's seat, side mirrors, and HUD can be memorized for up to two people and then recalled with a single-button operation.

# Safety Highlights

## Safety that's a Step Ahead.



Powered Windows for Ultimate Safety



ISO Fix Child Restraint System



6 SRS Airbags ( Driver/Passenger/Front Side/Curtain)

# A Smarter Way to Drive.

Sorento’s Surround View Monitor with a 360-degree camera, combined with front, side, and rear sensors, offers unparalleled safety and confidence on the road. Equipped with 5 cameras, 5 radars, and 12 ultrasonic sensors, it creates a comprehensive safety shield, ensuring ultimate protection from every angle.

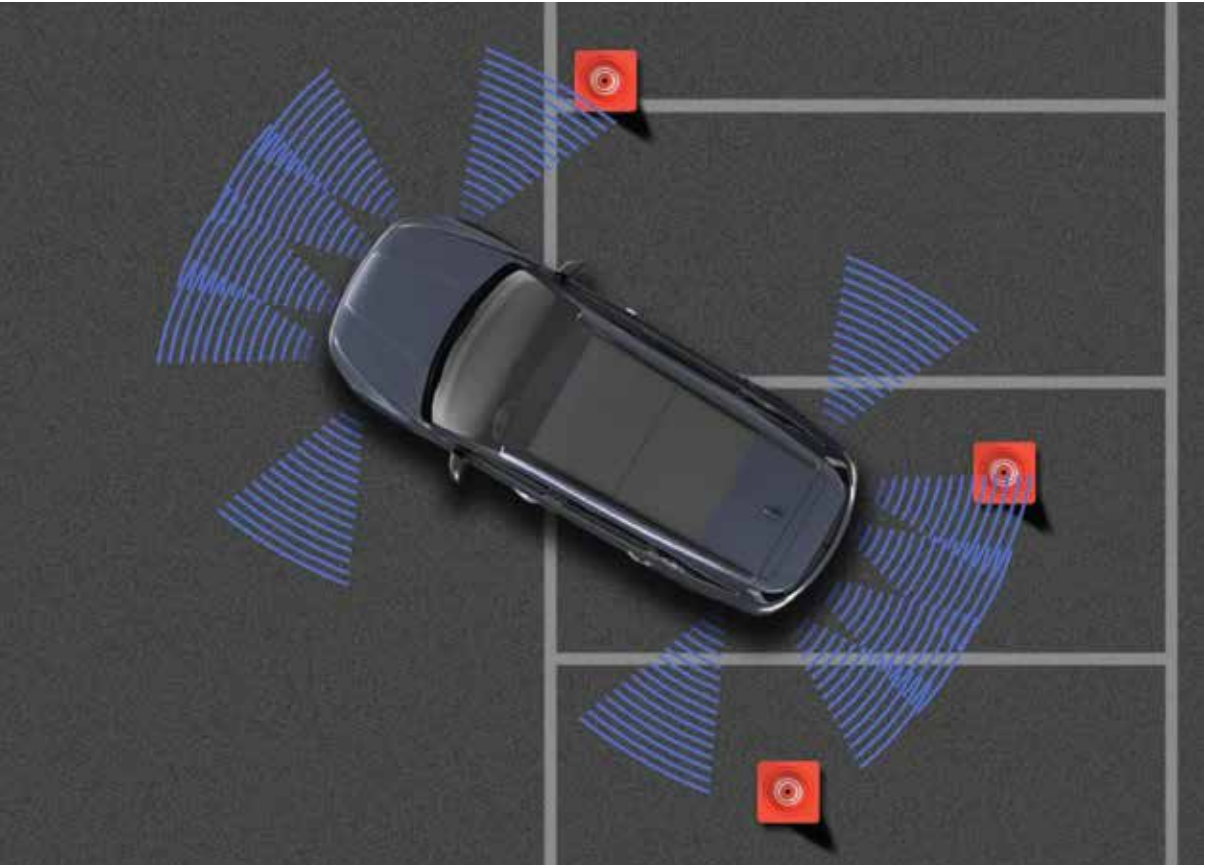
ROA determines whether infants are left in the vehicle and provides notifications to prevent safety accidents.



Surround View Monitor with 360° Camera View



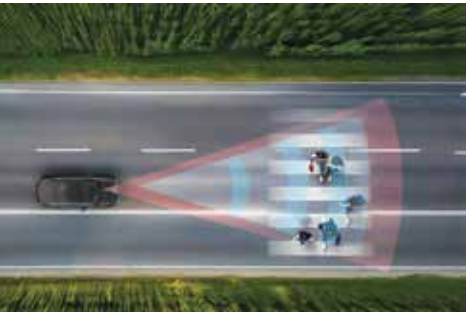
Rear Occupant Alert (ROA)



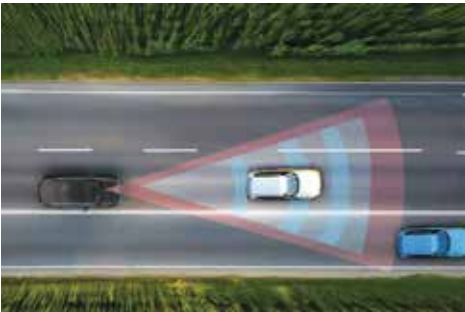
Front/Rear/Side Parking Sensors

# Kia Drive Wise

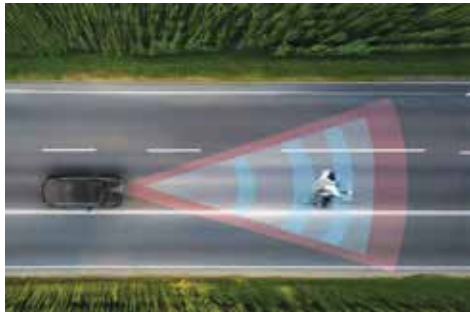
## Driving Technology that Protects.



Pedestrian



Car



Cyclist



Junction Turning

**Forward Collision-Avoidance Assist (FCA 2)** monitors your surroundings and warns you if it detects a risk of collision with a vehicle, pedestrian or cyclist ahead. If the risk persists, it automatically assists with emergency braking. FCA 2 also assists with emergency braking if it senses a risk of collision with oncoming vehicles while turning left at an intersection, or with vehicles approaching from left or right. When changing lanes, automatic avoidance steering assistance is engaged if there is a risk of collision with an oncoming vehicle in the next lane, a cyclist or pedestrian in the intended path, or an approaching rear-side vehicle. Reverse Parking Collision-Avoidance Assist (PCA)

From the moment you start out to the time you park, the Sorento is watching over you. Sensors and Advanced Driver Assistance System (ADAS) technology are working to anticipate and avoid risks and threats with masterful dynamic support — on the open road or as you ease into a parking spot

Junction Turning



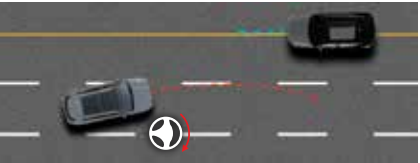
Warns if the left turn signal switch is activated at an intersection and the risk of collision with an oncoming vehicle from an adjacent lane is detected while turning left. Automatically assists with braking if the risk of collision increases after warning.

Junction Crossing



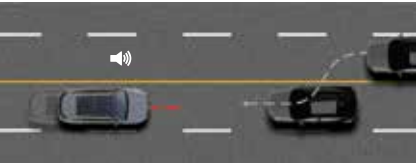
Warns if the risk of collision with an oncoming vehicle from either the left/right side while going straight at an intersection is detected. Automatically assists with braking if the risk of collision increases after warning.

Lane-change Oncoming



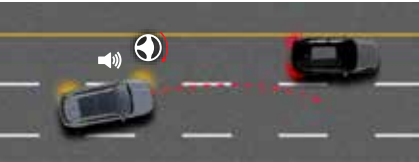
Warns if the risk of collision with an oncoming vehicle while changing lanes is detected. Automatically assists steering if the risk of collision increases after warning.

Direct Oncoming



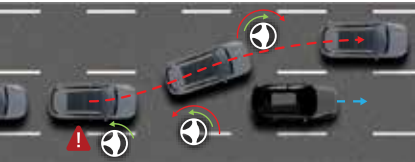
Warns if the risk of collision with an oncoming vehicle from the opposite side of the driving path is detected. Automatically assists with braking if the risk of collision increases after warning.

Lane-change Side



Warns if the risk of collision with a preceding vehicle in the next lane while changing lanes is detected. Automatically assists steering if the risk of collision increases after warning.

Driver Steering Assist



Warns if the risk of collision with a vehicle, a pedestrian, or a cyclist close to the front edge of the vehicle is detected and automatically assists with steering if the driver operates the steering wheel to avoid collision.

Auto Evasive Steering Assist



Warns if the risk of collision with a pedestrian, or a cyclist close to the front edge of the vehicle is detected and automatically assists evasive steering when there is space to evade the collision within the driving lane.

Blind-spot Collision-avoidance Assist

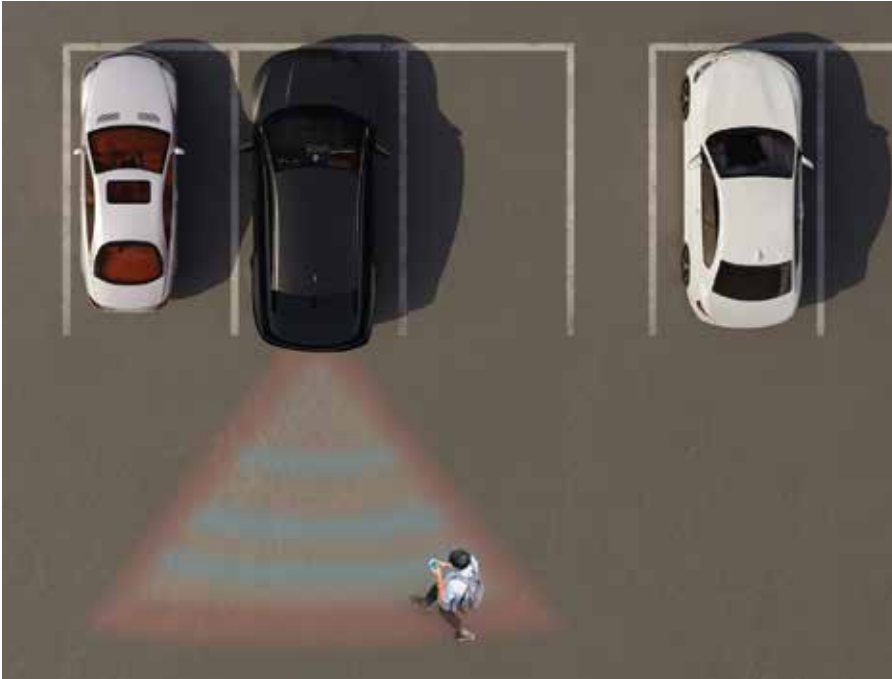


Automatically assists steering if the risk of collision with vehicles in the blind-spot while changing lanes is detected.

# Intelligent Controls That Protect and Assists.



**Reverse Parking Collision-Avoidance Assist (Reverse PCA)**  
provides a warning if there is a risk of collision with a rear object while reversing. It automatically assists with emergency braking if the risk of collision increases after the warning.



**Rear View Monitor with Dynamic Guidelines**  
A parking safety features that displays the rear view with parking guidelines using the rear view camera. It provides a rear top view for parking and trailer hooking and offers a continuous rear view driving for enhanced safety.

Auto Emergency Braking uses sensors and a camera to scan the road ahead for potential hazards and is designed to automatically apply the brakes when a potential collision is detected.



**Lane Following Assist (LFA)**  
To help you center the vehicle into lane while driving. LFA used the front view camera to help guide the steering based on lane markings or the car ahead.

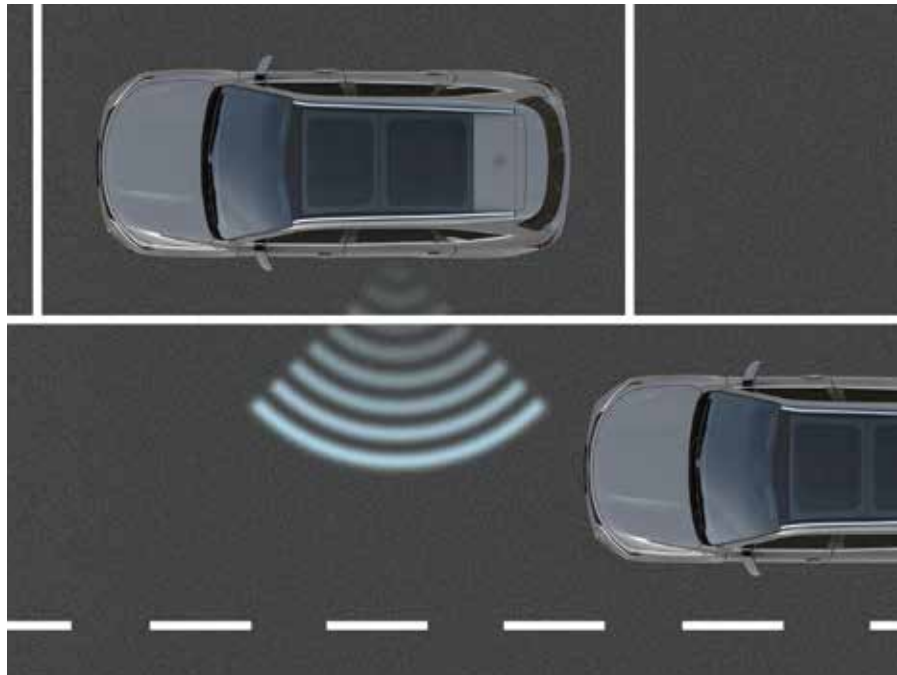


**Lane Keeping Assist (LKA)**  
Warns if a lane departure is detected without a turn signal switch operation. Automatically assists steering to prevent the vehicle from departing the lane only if a lane departure is detected without a turn signal switch operation.



**High Beam Assist (HBA)**  
Adjusting automatically based on surrounding lighting. It identifies the opposing vehicle's light source, optimizing both high and low beams for safer and more convenient night driving.

# In a State of Constant Vigilance.



**Safe Exit Assist (SEA)**  
A driving safety function that provides a warning and assistance when a vehicle is approaching from the rear-side while someone is getting out of the vehicle.

**Blind-Spot Collision-Avoidance Assist (BCA)**  
If you signal a lane change and BCA detects a risk of a collision with a vehicle approaching from the rear, it will automatically assist with braking to help avoid a collision.



**Driver Attention Warning (DAW)**  
DAW alerts the driver if their attention decreases to a certain level and incorporates a feature to warn them when the vehicle ahead begins to move.



Observing, sensing, and waiting to step in to help you avoid trouble, the latest ADAS technologies help keep you alert, safe and in control. This means keeping you at a safe distance from other vehicles and pedestrians, and even responding to unexpected situations in real time.



**Smart Cruise Control (SCC)**  
Smart Cruise Control (SCC, depicted above) helps you maintain a safe distance from the vehicle ahead at the speed you set. If the vehicle ahead stops abruptly, the Sorento automatically stops and then resumes acceleration.



**Blind-Spot View Monitor (BVM)**  
BVM displays a rear side of the lane while changing lane. The image appears in the cluster to help maneuvering safely.



**Rear Cross-Traffic Collision-Avoidance Assist (RCCA)**  
If obstacles are detected while reversing, it can warn the driver or automatically apply the brakes to help prevent a collision. Additionally, front and rear parking sensors provide real-time alerts, enhancing awareness and ensuring safer maneuvering.

Interior Color

The available terrain mode provides optimum driving force on challenging road conditions during your drive. Terrain Mode will offer better traction, stability and control on different types of surfaces such as Mud, Snow or Sand, featuring dedicated new driver modes for each scenario.



Premium All-Black Monotone



Leather



Quilted Leather (AWD)

Exterior Color



Interstellar Grey



Clear White



Gravity Blue



Volcanic Sand Brown



Fusion Black

Vehicle Dimensions



Wheels



18" Alloy Wheel (3.5 FWD)



19" Alloy Wheel (HEV)

Dimensions

Length (mm)	4,815
Width (mm)	1,900
Height (mm)	1,700
Minimum Ground Clearance (mm)	176, 174 (HEV)
Wheel Base (mm)	2,815

# Unparalleled Convenience.



Side Mirrors with Turn Signals



Hi-Tech Center Console



USB-C Charging Ports in Seat Back Cover



Electric Parking Brake with Auto Hold



Back Seat Double Pocket



Electrochromic Mirror



Illuminated Sun Visor



Dual Rear AC with 12V Ports



USB-C Charging Ports in Center Console



3<sup>rd</sup> Row 12V Charging Port



Full Size Alloy Spare Wheel



Emergency Toolkit



Rear Armrest with Cup Holder



2<sup>nd</sup> Row Multi-stage Armrest



2<sup>nd</sup> & 3<sup>rd</sup> Row Seat Belts



One-touch Console Lamp



See things through new eyes.  
The all-new Sorento.

More than just a striking new presence on the road, the Sorento offers a new way of appreciating the beauty of the world passing by. A driving experience that keeps you more engaged, relaxed, and in harmony with everyone and everything around you.

Spec Sheet			
Sorento MY 25 - Mechanical & Feature List	3.5 MPI FWD	1.6T FWD HEV	1.6T AWD HEV
Engine			
Engine Type	Smartstream 3.5 V6 DOHC MPI	SmartStream G1.6 DOHC T-GDI	SmartStream G1.6 DOHC T-GDI
Displacement (cc)	3,470	1,598	1,598
Engine Maximum Power (Hp)	269 / 6400 rpm	177	177
Engine Maximum Torque (Nm/rpm)	331 / 5000 rpm	265/1500-4500	265/1500-4500
Motor Maximum Power (Hp)	-	59	59
Motor Maximum Torque (Nm/rpm)	-	264/1600	264/1600
Combined Maximum Power (Hp)	-	238	238
Combined Maximum Torque (Nm/rpm)	-	367	367
Bore x Stroke (mm)	92 x 87	75.6 x 89.0	75.6 x 89.0
Compression Ratio	10.6	10.5	10.5
Fuel			
Fuel Supply System	Multi Point Injection (MPI)	Direct Injection (GDI)	Direct Injection (GDI)
Fuel Tank Capacity (L)	67	67	67
Battery			
Hybrid	-	●	●
Battery Type	-	Lithium-Ion Polymer	Lithium-Ion Polymer
Battery Voltage (V)	-	270	270
Battery Energy (kWh)	-	1	1
Battery Capacity (Ah)	-	6	6
Transmission			
Drivetrain	FWD	FWD	Active AWD Torque Vectoring Control
Transmission Type	8 Speed Automatic (Sports-Matic)	6 Speed Automatic	6 Speed Automatic
8 Speed Automatic (Sports-Matic)	●	-	-
Auto Shift	Auto Gear Shift	-	-
Shift-by-Wire (Dial Type)	-	●	●
Dimensions			
Length (mm)	4,815	4,815	4,815
Width (mm)	1,900	1,900	1,900
Height (mm)	1,700	1,700	1,700
Minimum Ground Clearance (mm)	176	174	174
Wheel Base (mm)	2,815	2,815	2,815
Luggage Space (2 Seats Up, 5 Seats Up, 7 Seats Up) (L, VDA)	1996/608/179	1996/608/179	1996/608/179
Steering, Brakes & Suspension			
Power Steering System	Column MDPS	Column MDPS	Column MDPS
Tilt & Telescopic Adjustable Steering Column	●	●	●
Drive Mode Select System	Normal, Eco, Sport, Smart	Eco, Sport, Smart	Eco, Sport, Smart
Terrain Mode Select System (3 Modes - Snow, Mud, Sand)	-	-	●

Energy Absorbing Steering Column	●	●	●
Front Brake	17 Inch	17 Inch	17 Inch
Rear Brake	16 Inch	17 Inch	17 Inch
Electronic Parking Brake with Autohold	●	●	●
Front Suspension / Rear Suspension	McPherson Strut / Multi-link Type	McPherson Strut / Multi-link Type	McPherson Strut / Multi-link Type
Manual Speed Limit Assist	●	●	●
Eco Features			
Regenerative Braking	-	●	●
Wheels and Tyres			
Tyre	235/60R18	235/55R19	235/55R19
Wheel Size	18"	19"	19"
Spare Wheel Tyre	Full Size Alloy	Full Size Alloy	Full Size Alloy
TPMS (Tyre Pressure Monitoring System)	-	●	●
Active Safety			
ABS (Anti-lock Braking System) with EBD & BA	●	●	●
ESC (Electronic Stability Control)	●	●	●
VSM (Vehicle Stability Management)	●	●	●
DBC (Downhill Brake Control)	●	●	●
HAC (Hill-Start Assist Control)	●	●	●
TSA (Trailer Stability Assist)	●	●	●
PCA (Parking Collision Avoidance Assist- Reverse)	-	-	
LKA (Lane Keeping Assist)	-	-	●
LFA (Lane Following Assist)	-	-	●
AEB (Autonomous Emergency Brake) with FCA (Forward Collision Avoidance Assist) - Car, Pedestrian, Cyclist & Junction Turning + Crossing	-	-	●
AEB (Autonomous Emergency Brake) with Lane-change Oncoming	-	-	●
AEB (Autonomous Emergency Brake) with Direct Oncoming	-	-	●
AEB (Autonomous Emergency Brake) with Lane-change Side	-	-	●
Driver Steering Assist	-	-	●
Auto Evasive Steering Assist	-	-	●
BCA (Blind Spot Collision Avoidance Assist)	-	-	●
SEW (Safe Exit Warning)	-	-	●
RCCA (Rear Cross Traffic Collision Avoidance Assist)	-	-	●
BVM (Blind Spot View Monitor)	●	-	●
HBA (High Beam Assist)	-	-	●
DAW (Driver Attention Warning) with Lead Vehicle Departure Alert	-	-	●
Smart Cruise Control w/ Stop & Go	-	-	●
Rear View Camera with Dynamic Parking Guidelines	-	●	-
Parking Sensors with Dash Display	Forward, Side & Reverse	Forward & Reverse	Forward, Side & Reverse
Speed Sensing Auto Door Lock	●	●	●
SVM (Surround View Monitor)	●	-	●

● = Available    - = Not Available

Passive Safety			
Cruise Control	●	●	-
Rear View Camera	-	●	-
360° Camera View	●	●	●
Auto Rain Sensing Wipers	●	●	●
Child Anchor Upper & Lower (5 x Top Tether / 4 x Isofix)	●	●	●
Rear Occupant Alert (w/sensor)	●	●	●
SRS Airbags	6	6	6
Security			
Smart Key with Push Button Start and Remote Engine Start	●	●	●
Anti-Theft Immobilizer	●	●	●
Central Door Lock (Driver + Passenger)	●	●	●
Remote Central Locking with Keyless Entry & Tailgate Release	●	●	●
Headlight Escort Function	●	●	●
Seating			
Seat Capacity	7	7	7
Seat Material	Leather	Leather	Leather
Seat Color	Premium All- Black Monotone	Premium All- Black Monotone	Premium All- Black Monotone
10-Way Power Driver's Seat (Including 2-Way Lumbar Support)	●	●	-
14-Way Power Driver's Seat (Including 4-Way Lumbar Support and Cushion Extension)	-	-	●
Integrated Memory System (Driver)	-	-	●
6-Way Passenger Seat including Height Adjust (Pumping Device)	●	●	-
10-Way Power Front Passenger's Seat (including 2-Way Lumbar Support and Walk-In Switch)	-	-	●
Sliding, Reclining & Flat Folding 2nd Row Seats (60:40)	●	●	●
Smart One-Touch 2nd Row Sliding Walk-In Device	●	●	●
2nd Row Centre Armrest	●	●	●
Split Fold Flat 3rd Row Seats (50:50)	●	●	●
Headrests with Height Adjust (All Seats) & Tilt Function (Front Seats)	●	●	●
Height Adjustable Front Seatbelts	●	●	●
Split Fold Rear Seats (60:40, 50:50)	●	●	●
Center Console Cup Holder	●	●	●
3-Point ELR Seatbelts on all Positions	●	●	●
Lights			
LED Front Head Lamps	Multi MFR	Multi MFR	4 Cube Projection (Hi & Low)
LED Daytime Running Lamps	●	●	●
Dusk-Sensing Automatic Headlights	●	●	●
Auto Light Control	●	●	●
LED High-Mounted Stop Lamp	●	●	●
LED Fog Lights (Front + Rear)	●	●	●
Outside Mirror Mounted Side Indicators	●	●	●
LED Rear Combination Lights	●	●	●

Console Lamp	●	●	●
Room Lamp (2nd Row)	●	●	●
Luggage Lamp	●	●	●
64-Color LED Ambient Mood Light	-	●	●
Outside Door Handle Welcome Lights (Front)	●	●	●
Glass/Rear View Mirror			
Electrochromic Mirror	●	●	●
Outside Door Mirrors with Integrated Side Indicator	●	●	●
Electric Folding Outside Mirrors with Automatic Folding Function	●	●	●
Outside Mirrors with Heated Function	●	●	●
Windscreen & Front Door Glass	Tinted	Tinted + Solar	Tinted + Solar
Windscreen with Acoustic Film	●	●	●
Exterior Features			
Three-dimensional Radiator Grille	Glossy Black	Glossy Black	Glossy Black
Skid Plate (Front & Rear)	Satin Silver	Chrome	Chrome
Body Colored Outside Mirrors	●	●	●
Body Colored Door Handles	●	●	●
Molding Door Side Garnish	Chrome	Chrome	Chrome
Panoramic Sunroof (One-Touch)	●	●	●
Roof Rack	●	●	●
Rear Spoiler	●	●	●
Aero-Blade Type Front Wipers	●	●	●
Mud Guard	●	●	●
Hidder Rear Wiper & Washer (2-Speed)	●	●	●
Shark Fin Antenna	●	●	●
Memory Tailgate with Height Adjuster	●	●	●
Emblem	-	HEV	HEV
Interior Features			
Steering Wheel Material	3-Spoke Leather	3-Spoke Leather	3-Spoke Leather
Steering Wheel Control	Audio, Call, Voice Recognition, Cruise Control,MID	Audio, Call, Voice Recognition, Cruise Control,MID	Audio, Call, Voice Recognition, Cruise Control,MID
Steering Wheel Mounted Audio/Bluetooth Controls	●	●	●
Heated Steering Wheel (2 Levels)	-	●	●
Paddle Shifters	-	●	●
Colored HD Head-Up Display (HUD)	-	-	●
Ambient Temperature Display (within Cluster)	●	●	●
Power Windows with Auto Up/Down (Driver) & Safety Function	●	●	●
Inside Handles	Metal Paint	Ion Plating	Ion Plating
Alloy Door Scuff Panels	●	●	●
Center Fascia (Main Pattern)	Metal Paint	Insert Film	Insert Film
TGS Knob Material	Leather	-	-
Roof Trim	Cloth	Cloth	Cloth
Illuminated Sunvisors with Sliding Function	Driver	Driver + Passenger	Driver + Passenger

● = Available    - = Not Available

Glass Vanity Mirror (Driver + Passenger)	●	●	●
1st Row USB Chargers ( 2 x Front Console)	●	●	●
2nd Row USB Chargers ( 2 x Behind 1st Row Seats)	-	●	●
3rd Row USB Chargers ( 2 x Cargo Area)	●	●	●
2 x 12 Volt Power Outlets (1 x Behind Centre Console & 1 x Cargo Area)	●	●	●
Wireless Phone Charging	●	●	●
Luggage Screen	●	●	●
Console Box	●	●	●
8 x Cup Holders (2 x Front, 4 x 2nd Row x 3rd Row)	●	●	●
4 x Bottle Holders (2 x Front & 2 x 2nd Row)	●	●	●
Glovebox with Illumination	●	●	●
Cigar Lighter & Ash Tray	●	-	-
Storage			
Centre Console Storage Box with Bucket Tray	●	●	●
Front Console Tray with Lid	●	●	●
Accessory Pockets (Tray Behind Front Cup Holders & 3rd Row Sides)	●	●	●
Seat Back Pocket (Driver + Passenger)	●	-	-
Seat Back Panel with Pocket (Driver + Passenger)	-	●	●
2 x Coat Hooks (2nd Row Sides)	●	●	●
Luggage Net, Screen & Under-Floor Compartment	●	●	●
Infotainment & Driver Display			
Sounds of Nature	●	●	●
Audio Player with AM/FM Tuner	●	●	●
Bluetooth Multi-Connection Functionality (Phone/Media Stream)	●	●	●
Wireless Android Auto with Voice Recognition	●	●	●
Wireless Apple CarPlay with Voice Recognition	●	●	●
8 Speaker Audio System (Front Door, Rear Door, Front Dash & Front Tweeters)	●	●	-
12 BOSE® Premium Sound System (8 Speakers, 2 Tweeters, Centre Speaker & Subwoofer)	-	-	●
Curved Hexagonal Display (12.3" Digital Driver Cluster + 12.3" Touch Screen Infotainment)	●	●	●
SDVC (Speed Dependent Volume Control)	●	●	●
Digital Information Display	●	●	●
Infotainment/Climate Switchable Controller	●	●	●
Ventilation			
Dual-Zone Auto Climate Control Air-Conditioning	●	●	●
2nd Row Vents (Behind Center Console)	●	●	●
3rd Row Fan Control & Vents	-	-	●
Ventilated Seats (1st Row Seats)	-	-	●
Heated Seats (1st Row Seats)	-	●	●
Auto Defogger	●	●	●
Air Filter	●	●	●

● = Available    - = Not Available

# Dealership Network

A strong growing foot print of 28 state-of-the-art dealerships in 14 cities, keeps you covered wherever you are.



Dealership Name	City
Peshawar	Kia Motors Khyber
Rawalpindi	Kia Motors Potohar
Azad Kashmir	Kia Motors Chinar
Abbotabad	Kia Motors Silk Route
Sialkot	Kia Motors Sports City
Islamabad	Kia Motors Murree Road
	Kia Motors Metropolis
	Kia Motors 9th Avenue
Faisalabad	Kia Motors Canal Road
Sargodha	Kia Motors Citrus City
Lahore	Kia Motors Township
	Kia Motors Samaa
	Kia Motors Ferozepur
	Kia Motors Defence
	Kia Motors Kings Gate
Multan	Kia Motors Festival City
	Kia Motors City of Saints
	Kia Motors Golden Sands*
Bahawalpur	Kia Motors Royal City
Rahim Yar Khan	Kia Motors United
Karachi	Kia Motors Clifton
	Kia Motors South
	Kia Motors Port Qasim
	Kia Motors Macca
	Kia Motors Site
Quetta	Kia Motors Lucky One
	Kia Motors Airport Road

\*Coming soon

## Kia Service there where you are

**4 YEARS**  
OR  
**WARRANTY**  
100,000\*KM

### Warranty

All Kia vehicles come with 4 years or 100,000 km warranty, whichever comes first.

**8 YEARS**  
OR  
**HIGH VOLTAGE BATTERY**  
**WARRANTY**  
160,000\*KM

### Hybrid Battery Warranty

The all-new Sorento comes with 8 years or 160,000 km warranty, whichever comes first.



### First Two Free Services

All Kia vehicles are offered the first two services free.



### Kia Instant Messenger

Your convenience matters to us. Connect with us anytime, anywhere on WhatsApp at 0303 5425420.

**LMC** | CERTIFIED  
PRE-OWNED

### LMC Certified Pre-Owned

It allows customers to buy a high-quality certified used car or trade in their old vehicle to upgrade to a new LMC model. Every certified vehicle undergoes a comprehensive inspection, comes with an LMC-backed warranty, and ensures peace of mind.



### Kia Roadside Assistance

Kia Roadside Assistance, with its highly trained and technically equipped staff, is a speedy support service for Kia customers who experience a car breakdown.

## Movement that inspires

At Kia, we believe movement inspires ideas. Great ideas come to you when you're on the move. Whether you're walking, traveling on a train or driving. It's why we create the spaces and the time you need to bring ideas to life.

All information, illustrations and specifications are accurate at the time of printing and are subject to change without notice.

This brochure is intended for reference purposes only. Specifications may vary based on the model. The model, colors, and specifications shown in this brochure may vary from the actual product. Contact your local Kia dealer for current information and full warranty details including terms and conditions.

Kia Pakistan reserves the right to discontinue or change the models, features, specifications, options, designs and prices of products referred to in this sheet without incurring any liability whatsoever to any purchaser or prospective purchaser of any such products.

Safety technologies are designed as supplementary systems and do not substitute the driver's responsibility to remain attentive and exercise caution. Radar and sensor-based features are intended to assist the driver in operating the vehicle safely, but their functionality may be influenced by various conditions. The driver remains fully responsible for timely braking and vehicle control at all times. Safe driving is ultimately the driver's responsibility. The capabilities of Kia Drive Wise may be limited in situations such as sharp turns, driving on inclines or declines, intense glare, unexpected lane changes by other vehicles, or the presence of blind spots. Study owner's manual for exact information.

Performance metrics are based on controlled conditions. Actual driving performance may vary depending on environmental factors, vehicle conditions, and driver skills.

Bose® is a registered trademark of Bose Corporation.

Not all mobile phones will be compatible with the vehicle's Bluetooth® system. Bluetooth® is a registered trademark of Bluetooth SIG.

Android Auto™ connectivity requires a compatible Android device. Android Auto™ is a registered trademark of Google Inc. Apple CarPlay™ connectivity requires a compatible iOS device. Apple CarPlay™ is a registered trademark of Apple Inc.

Pakistan's Largest & Most Powerful 7-Seater SUV\*. In length and Horsepower, locally assembled.



Movement that inspires



/KiaMotorsPakistan



/KiaMotorsPk



/kiamotorsPakistan



/KiaMotorsPakistan



+92 303 5425420